



## PD300-TO46-FW Series

### Features:

### Applications:

### Specifications:

#### Absolute Maximum Ratings:

Parameter	Symbol	Min.	Max.	Unit
		—		
		—		
		—		
				°C
				°C
	—	—		°C
	—	—		

#### Characteristics: (Ta=25°C unless otherwise noted)

Parameter	Symbol	Test Conditions	Min.	Typ.	Max.	Unit
		—	—		—	
					—	
					—	
			—			
			—			
		—		—		



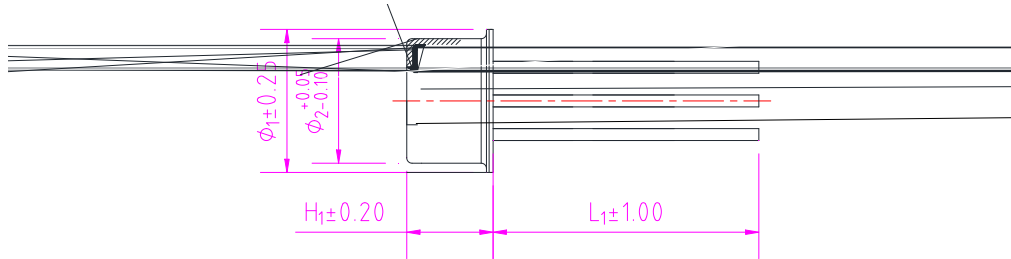
文件编号: \_\_\_\_\_

版本: \_\_

实施日期: \_\_\_\_\_

第\_页 共\_页

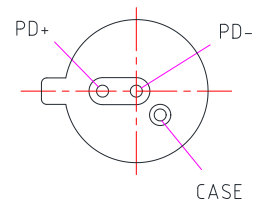
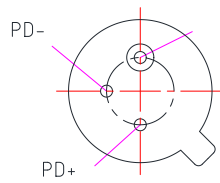
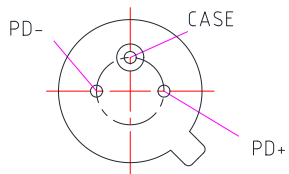
### Mechanical Dimension and Pin Assignment:



Type A

Type B

Type C





---

文件编号: \_\_\_\_\_ 版本: \_\_ 实施日期: \_\_\_\_\_ 第\_页 共\_页

**Statement:**

---

**Contact Information:**

\_\_\_\_\_

---